



**APR BRIGHT INDUSTRIES**

ISO 9001:2008 CERTIFIED COMPANY

# CLAMSHELL BUCKET

**The Ultimate Solution for  
Efficient Material Handling**



## TYPES

- ✓ Hydraulic Clamshell Buckets
- ✓ Mechanical Clamshell Buckets
- ✓ Electro-Hydraulic Clamshell Buckets



**VERSATILE  
AND  
RELIABLE**



**VISIT OUR WEBSITE**  
[www.aprgrabs.com](http://www.aprgrabs.com)



**CONTACT US**  
+91-98167 00039

# HYDRAULIC CLAMSHELL BUCKET

**With or  
Without  
Rotator  
360°**



## FEATURES

- ✓ High-Precision Control
- ✓ Hydraulic Cylinder Operation
- ✓ Superior Gripping Force
- ✓ Wide Range of Applications

It can be attached to excavators, cranes, and other hydraulic machinery.





# MECHANICAL CLAMSHELL BUCKETS

## FEATURES

- ✓ Cable-Operated System
- ✓ Multi-Rope Systems
- ✓ Gravity-Assisted Digging
- ✓ Large Capacity

## Options:

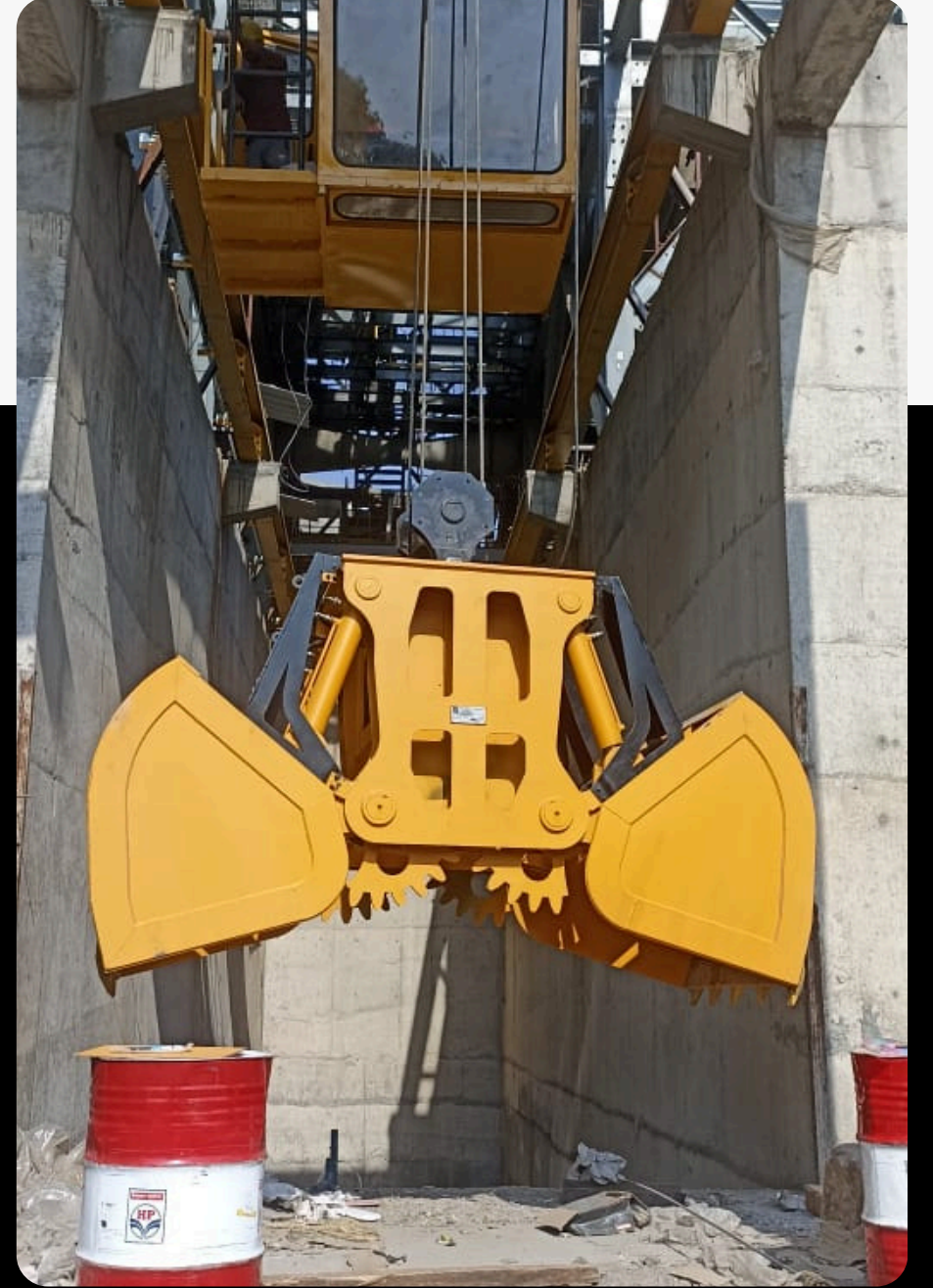
- Single-Line
- Two-Rope
- Four-Rope



**Attachment for cranes that have a two-line or multi-line system, such as harbor cranes, ship cranes, and overhead gantry cranes.**



# ELECTRO-HYDRAULIC CLAMSHELL BUCKETS



## FEATURES

- ✓ Electric-Hydraulic Interface
- ✓ Remote Operation
- ✓ Energy Efficiency
- ✓ Robust Construction

It offer a more advanced level of control and efficiency, particularly in applications where power is supplied directly to the bucket, such as on ship gears or gantry cranes. It is also suitable for steel mills, incinerating plants, and other industrial settings.



# BY APPLICATION AND DESIGN

- Digging Clamshell Buckets
- Orange Peel Clamshell Buckets
- Rehandling Buckets
- Dredging Clamshell Buckets
- Rock Clamshell Buckets
- Clamshell Buckets with Grapple
- Loading and Unloading Material
- Recycling and Waste Transfer

**BOOK NOW**



## CONTACT

+91-98167 00039  
[www.aprgrabs.com](http://www.aprgrabs.com)  
Baddi, Himachal Pradesh  
174103



DIMENSION FOR OUR DIFFERENT MODELS

Capacity m <sup>3</sup>	Working pressure Bar	Aprox Weight kg.	Dimensions in mm				
			A	B	C	H	H1
0.75	160 To 180	1500	1700	1850	855	1730	1125
1	161 To 180	1800	1875	2130	935	1896	1225
1.5	162 To 180	2150	2185	2445	1020	2105	1340
2.5	180 To 200	2950	2535	2815	1250	2541	1740
5	181 To 200	4300	3160	3510	1580	3115	1934
6	182 To 200	5050	3335	3760	1700	3305	2032

